



TECH-CONNECT DEVICE HOLDER w/FAIRING MOUNT 1697

PARTS INCLUDED

- 1 Tech-Connect Device Holder with Fairing Mount—Black
- 1 Left Side Fairing Mount—Black
- 1 Thin Foam Pad with Adhesive Back
- 1 Hardware Kit Containing:
 - 1 1/4" Flat Washer
 - 1 1/4"-20 Nylock Nut
 - 4 6" Black Nylon Cable Ties
 - 1 Package Anti Seize
- 1 Installation Instructions

Please read and understand entire instructions before starting installation.

THANK YOU FOR CHOOSING KÜRYAKYN!

IN ORDER TO PROTECT YOU AND OTHERS FROM POSSIBLE INJURY AND/OR PROPERTY DAMAGE OR LOSS, PLEASE PAY CLOSE ATTENTION TO ALL INSTRUCTIONS, WARNINGS, CAUTIONS AND NOTICES REGARDING THE USE AND CARE OF THIS PRODUCT.

WARNING	THIS INDICATION ALERTS YOU TO THE FACT THAT IGNORING THE CONTENTS DESCRIBED HEREIN CAN RESULT IN POTENTIAL DEATH OR SERIOUS INJURY.
NOTICE	This indication alerts you to the fact that ignoring the contents described herein may negatively affect product performance and functionality.
CAUTION	This indication alerts you to the fact that ignoring the contents described herein can result in potential injury.

NOTICE IF INSTALLING THIS PRODUCT FOR ANOTHER PARTY, PLEASE MAKE SURE THEY RECEIVE THIS COPY OF THE INSTALLATION INSTRUCTIONS SO THEY ARE AWARE OF

TOOLS SUGGESTED

Set Of Torx Wrenches, Set of Combination Wrenches

STRICTLY OBSERVE THE FOLLOWING GUIDELINES IN ORDER TO USE THE PRODUCT PROPERLY AND AVOID POTENTIALLY DANGEROUS ACCIDENTS.

STEP 1 Read and understand all steps in the instructions before starting the installation. Park the motorcycle on a hard, level surface and turn off the ignition.

NOTE: For devices measuring 1-5/8" to 3-5/8" wide.

NOTICE Avoid damage to the motorcycle. Protect painted surfaces with a soft cloth or blanket.

STEP 2 Place a clean, soft blanket over the gas tank to protect the paint.

CUSTOMER SERVICE
877.370.3604 (toll free)

INSTALLATION QUESTIONS
techsupport@kuryakyn.com
or call 715.247.2983

LIMITED WARRANTY

Kuryakyn warrants that any Kuryakyn products sold hereunder, shall be free of defects in materials and workmanship for a period of one (1) year from the date of purchase by the consumer excepting the following provisions:

- Kuryakyn shall have no obligation in the event the customer is unable to provide a receipt showing the date the customer purchased the product(s).
 - The product must be properly installed, maintained and operated under normal conditions.
- Kuryakyn makes no warranty, expressed or implied, with respect to any gold plated products.
 - Kuryakyn shall not be liable for any consequential and incidental damages, including labor and paint, resulting from failure of a Kuryakyn product, failure to deliver, delay in delivery, delivery in nonconforming condition, or for any breach of contract or duty between Kuryakyn and a customer.
- Kuryakyn products are often intended for use in specific applications. Kuryakyn makes no warranty if a Kuryakyn product is used in applications other than intended.
- Kuryakyn electrical products are warranted for one (1) year from the date of purchase by the consumer. L.E.D.'S contained in components of Kuryakyn products will be warranted for defects in materials and workmanship for 3 years from the date of purchase where as all other components shall be warranted for one(1) year. This includes, but is not limited to; control modules, wiring, chrome & other components.
- Kuryakyn makes no warranty of any kind in regard to other manufacturer's products distributed by Kuryakyn. Kuryakyn will pass on all warranties made by the manufacturer and where possible, will expedite the claim on behalf of the customer, but ultimately, responsibility for disposition of the warranty claim lies with the manufacturer.

ABOUT OUR CATALOG

For purchasing Kuryakyn® products, you can receive a complete catalog free of charge. Send the Proof-of-Purchase below with your address to: Kuryakyn, P.O. Box 339, Somerset, WI 54025. Please indicate either Accessories Catalog for Harley-Davidson® or GL & Metric Cruisers.

Be sure to ask your local dealer about other Kuryakyn® products, the motorcycle parts and accessories designed for riders by riders.

©2005 Kuryakyn USA® All Rights reserved.





Ensure that the installation of this product does not interfere with the proper operation of the motorcycle before riding.



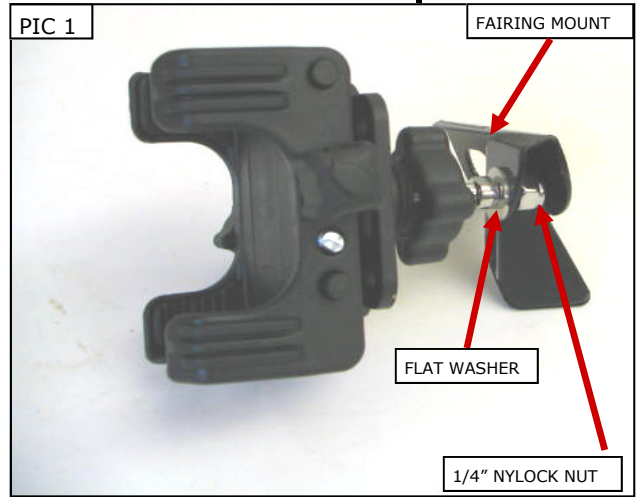
It is the installer's responsibility to ensure that there is adequate clearance between the Tech-Connect and any painted surfaces. Küryakyn is not responsible for any damage due to inadequate clearance.



Be aware of any cables/wires that could potentially be pinched or crushed while using this product.

STEP 3

Install the Tech-Connect holder to the Fairing Mount by inserting the metal shaft through the 1/4" flat washer, then through the hole in the Fairing Mount. Secure the Tech-Connect with the included 1/4"-20 nylock nut. PIC 1 Tighten securely

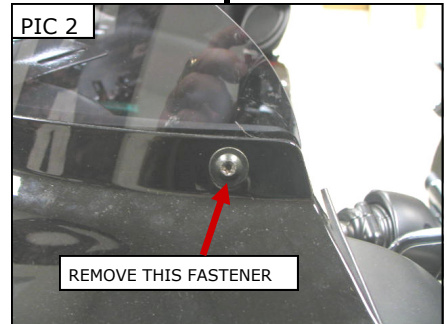


STEP 4

Remove the outside left windscreen fastener as shown in PIC 2.

STEP 5

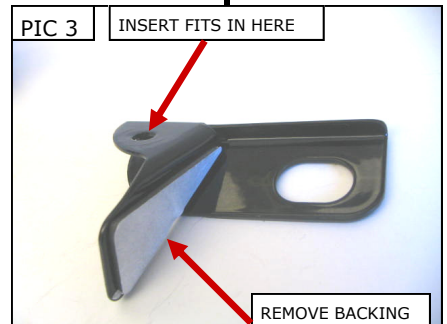
Remove the adhesive backing from the side of the Fairing Mount. PIC 3 Gently spread the windscreen away from the inner fairing and slide the Fairing mount in between the inner fairing and the windscreen. The threaded insert in the inner fairing will fit inside the large slot on the Fairing Mount.



Use the supplied anti-seize for fasteners; this will prevent galling and make future removal of fasteners easier.

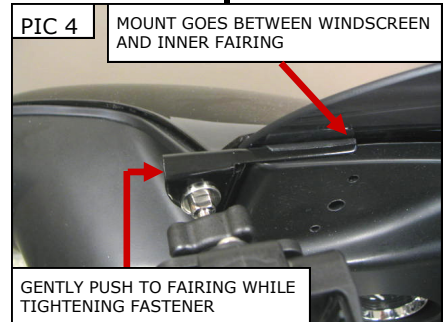
STEP 6

Gently push the Fairing Mount against the inner fairing, insert the fastener removed in Step 3 through the outer fairing and windscreen and thread into the inner fairing. PIC 4 Tighten securely.



STEP 7

Turn the handlebars in both directions to their full stop position and ensure that there is clearance between the mounting plate/Accessory and the gas tank, dash and other accessories.



ENSURE THAT THERE IS CLEARANCE AT ALL POINTS WHEN THE HANDLEBARS ARE TURNED. INSUFFICIENT CLEARANCE MAY CAUSE DAMAGE TO THE MOTORCYCLE OR CAN CAUSE LOSS OF CONTROL THAT COULD RESULT IN SEVERE INJURY OR DEATH.



TO PREVENT POSSIBLE LOSS OF CONTROL, WHICH COULD RESULT IN SERIOUS INJURY OR DEATH, WE DO NOT RECOMMEND REMOVING, REPLACING OR OPERATING THE DEVICE IN THE TECH-CONNECT WHILE RIDING THE MOTORCYCLE.



It is the installer's responsibility to ensure that all of the fasteners (including pre-assembled) are tightened before operation of the motorcycle. Küryakyn will not issue a warranty on components lost due to improper installation. Periodic maintenance may be required.

-cont.-

USING THE TECH-CONNECT HOLDER

STEP 1 Open the Tech-Connect Holder so the sides are separated from the center section. Peel the narrow pieces of foam off the backing paper, center them in the inset portion of the sides and apply them to the sides of the holder. Peel the wide piece of foam from the backing paper, center it in the inset portion in the center and apply it to the center of the holder. PIC 6

STEP 2 To adjust the opening in the Tech-Connect larger, turn the knobs on the outside of the Tech-Connect (PIC 6) counter clockwise until your device will fit in between the arms. Turn the knobs clockwise to close the arms around the device. There is a locking detent under the knobs to hold them in place once they come in contact with the device. **DO NOT over tighten the knobs. Tightening them too tight will not allow you to loosen them with your fingers.** Periodically check the tightness of the mobile device in the Tech-Connect.

NOTE: For best results keep "L" shaped foot portion of the Tech-Connect Holder on the bottom of the device. Keep the device holding support arms centered on the mounting plate.

STEP 3 To remove the Tech-connect from the bike for storage, loosen the tensioning nut on the back side of the holder until it clears the threads. PIC 7 Snap the Tech-Connect holder off of the ball. PIC 8 Remove the tension nut and thread it to the Tech-Connect holder for storage.

STEP 4 To replace the Tech-Connect on the swivel ball, remove the tension nut from the back. Slide the tension nut over the swivel ball, snap the Tech-Connect back on the swivel ball and thread the tension nut onto the Tech-Connect. Tighten the tension nut to the desired tension.

STEP 5 To adjust the angle of the Tech-Connect, loosen the tensioning nut, adjust the Tech-Connect to the desired position and tighten the tension nut. PIC 5 The tension nut will allow you to keep the Tech-Connect in the same position or, with a little less tightness, allow you to move the Tech-Connect on the swivel ball.

WARNING DO NOT ATTEMPT TO OPERATE OR REMOVE THE MOBILE DEVICE FROM THE HOLDER WHILE OPERATING THE MOTORCYCLE.

NOTICE Ensure that the Mobile Device is secure in the Tech-Connect Holder. Küryakyn is not responsible for any Device that is stolen or damaged from use in this Holder or from the Holder not being properly secured to the motorcycle. It is the installer's responsibility to ensure that all of the fasteners (including pre-assembled) are tightened before operation of the motorcycle. Küryakyn will not issue a warranty on components lost due to improper installation. Periodic maintenance may be required.

NOTICE Motorcycling can be done in a harsh environment. Make sure your Mobile Device is appropriate for this application.

