



DASH PANEL INSERT 1522

PARTS INCLUDED

- 1 Dash Plate with Bezel
1 Hardware Kit
1 Dash Insert (Left Side)
1 Dash Insert (Right Side)
1 5/16" Special Dash Nut
1 Hot Spot
1 Alcohol Pad
1 Installation Instructions

Please read and understand entire instructions before starting installation.

THANK YOU FOR CHOOSING KÜRYAKYN!

IN ORDER TO PROTECT YOU AND OTHERS FROM POSSIBLE INJURY AND/OR PROPERTY DAMAGE OR LOSS, PLEASE PAY CLOSE ATTENTION TO ALL INSTRUCTIONS, WARNINGS, CAUTIONS AND ATTENTION NOTES REGARDING THE USE AND CARE OF THIS PRODUCT.

WARNING! THIS INDICATION ALERTS YOU TO THE FACT THAT IGNORING THE CONTENTS DESCRIBED HEREIN CAN RESULT IN POTENTIAL DEATH OR SERIOUS INJURY.

CAUTION! This indication alerts you to the fact that ignoring the contents described herein can result in potential injury or material damage.

ATTENTION! This indication alerts you to the fact that ignoring the contents described herein may negatively affect product performance and functionality.

TOOLS SUGGESTED

Set of Hex Wrenches, Socket Set with Ratchet

STRICTLY OBSERVE THE FOLLOWING GUIDELINES IN ORDER TO USE THE PRODUCT PROPERLY AND AVOID POTENTIALLY DANGEROUS ACCIDENTS.

PROCEDURE

STEP 1 Read and understand all steps in the instructions before starting the installation. Park the motorcycle on a hard, level surface; turn off the ignition and allow the engine to cool.

STEP 2 Remove the stock acorn nut, and washer where applicable, securing the stock dash to the fuel tank; set it aside, it will not be re-used. See FIG.1.

STEP 3 Clean the area shown in FIG.1 with soapy water and a rag to remove any dirt or grime; allow the area to dry completely.

STEP 4 Wipe the area with the included alcohol pad; allow to dry completely.

STEP 5 Position the dash plate over the stock dash; align the holes in the dash plate and the stock dash.



CUSTOMER SERVICE 877.370.3604 (toll free)

INSTALLATION QUESTIONS techsupport@kuryakyn.com or call 715.247.2983

LIMITED WARRANTY

Kuryakyn warrants that any Kuryakyn products sold hereunder, shall be free of defects in materials and workmanship for a period of one (1) year from the date of purchase by the consumer...

- Kuryakyn shall have no obligation in the event the customer is unable to provide a receipt showing the date the customer purchased the product(s).
• The product must be properly installed, maintained and operated under normal conditions.
• Kuryakyn makes no warranty, expressed or implied, with respect to any gold plated products.
• Kuryakyn shall not be liable for any consequential and incidental damages, including labor and paint, resulting from failure of a Kuryakyn product, failure to deliver, delay in delivery, delivery in nonconforming condition, or for any breach of contract or duty between Kuryakyn and a customer.
• Kuryakyn products are often intended for use in specific applications. Kuryakyn makes no warranty if a Kuryakyn product is used in applications other than intended.
• Kuryakyn electrical products are warranted for one (1) year from the date of purchase by the consumer. Components of Kuryakyn products containing L.E.D.s will be warranted for defects in materials and workmanship for 3 years from the date of purchase.
• Kuryakyn makes no warranty of any kind in regard to other manufacturer's products distributed by Kuryakyn.

ABOUT OUR CATALOG

You'll find all our innovations for H-D, GL and Metric Cruisers in our annual catalogs. Order online today-select the "CATALOGS" icon. Each Kuryakyn® product comes with a Proof-of-Purchase good for a complimentary catalog. Details in packaging.

Be sure to ask your local dealer about other Kuryakyn® products, the motorcycle parts and accessories designed for riders by riders.

©2005 Kuryakyn USA® All Rights reserved.



STEP 6 Secure the dash plate to the stock dash with the included special dash nut; tighten the nut.

STEP 7 Test fit the dash inserts to determine the left and right side. They should follow the slight angle of the mounting area.

STEP 8 Rub the adhesive backing on the dash inserts to activate the adhesive.

STEP 9 Position the dash inserts as shown in FIG.2; press in place for at least 60 seconds each for the best adhesion.

STEP 10 Push the included hot spot into the socket head of the special dash nut.

STEP 11 Ensure proper operation and clearance before riding the motorcycle.

ATTENTION! It is the installer's responsibility to ensure that all of the fasteners (including pre-assembled) are tightened before operation of the motorcycle. Kuryakyn will not warranty components lost due to improper installation. Periodic maintenance may be required.

Ride On!

Kuryakyn[®]

FIG. 1

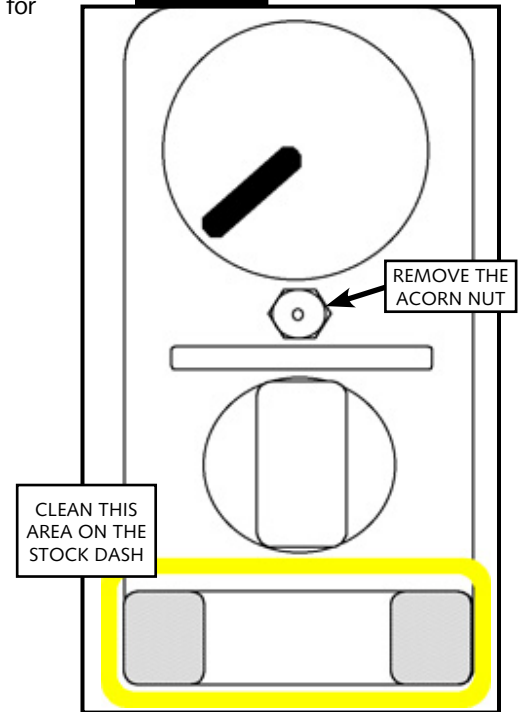
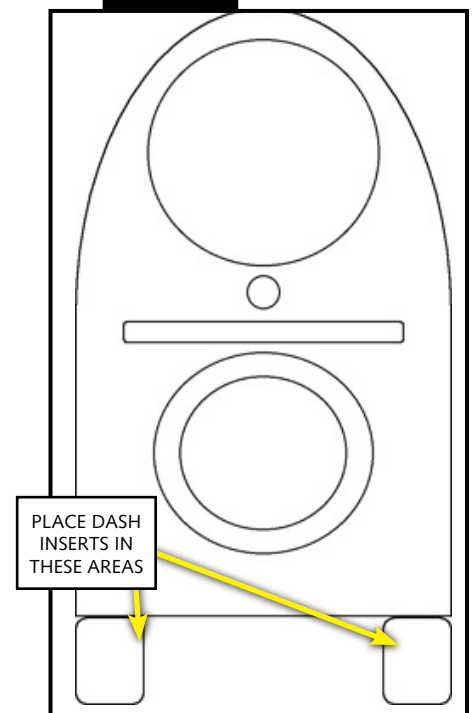


FIG. 2



PAGE

2