

Thank you for purchasing a National Cycle® product. Please read these instructions carefully and thoroughly before beginning work. Dealers if installing this windshield for a customer please give them this manual. It contains information needed to properly maintain and use this product.

**Attention**



Special notes and cautionary measures which can prevent damage to the accessory or motorcycle.

**Note**



Tips for facilitation of operation, control and adjustment, as well as maintenance.

Parts List				Notes
Item	Part Number	Description	Qty.	
1	N2708	Chrome, Light Tint	1	One Gladiator Windshield Assembly
1	N2709	Chrome, Dark Tint	1	
	Bag #1014			
2	49-495675-000	Bushing .60 L	2	
3	51-511313-000	Screw, 5/16" 18 x 1.5	2	

**TOOLS REQUIRED**

- T40 Torx Wrench
- 7/16" Box Wrench

**PREPARATION**

1. Position the motorcycle securely on its stand.



Cover the front fender and fuel tank with a cloth to avoid scratches.

**MAINTENANCE:** Wash with a clean soft cloth, plenty of warm water and, if necessary, a non-abrasive soap such as dishwashing liquid. Flannel or soft chamois make good cleaning cloths. Do not allow brake fluid, alcohol, or strong solvents to contact the screen.

National Cycle Windshield Wash Part number N1401 is a good everyday cleaner. Product is supplied with a handy travel size container and microfiber cloth for easy storage on the motorcycle. Inquire with your local dealer or visit: [www.nationalcycle.com](http://www.nationalcycle.com).

Go to **INSTALLATION, PAGE 2**

**WARNING**

Never ride your motorcycle with loose accessory mounting hardware. Check the hardware for tightness regularly.

Today's motorcycles are built with enough frame rigidity to withstand the moderate loads imposed on them by the foreseeable addition of an accessory(ies). If an accessory(ies) adversely affects your motorcycle's stability, immediately remove the accessory(ies). Do not ride a motorcycle that exhibits unsafe handling traits.

Have experienced service personnel correct any problem before riding with the accessory(ies) installed. For further questions concerning handling problems associated with an accessory(ies), contact your dealer, motorcycle manufacturer, or accessory manufacturer.



**National Cycle 3-Year Limited Warranty**

Register your windshield online at: [www.nationalcycle.com/register.html](http://www.nationalcycle.com/register.html)

or contact Customer Service at National Cycle, Inc., PO Box 158, Maywood, IL 60153, USA 708-343-0400

National Cycle hereby warrants to the original registered owner of a National Cycle polycarbonate windshield for a period of three years from the date of purchase against breakage. This limited warranty is expressly limited to the replacement of the polycarbonate windscreen. This limited warranty does not include scratches, coating failure, cosmetic wear and tear, replacement of hardware, or any consequential damages or expenses including labor cost of installation, removal and/or replacement, inconvenience, inbound freight expenses or damage to any other component of the motorcycle or any other accessories. Certain chemicals, generally known as acidic hydrocarbons, are known to cause polycarbonate damage and will not be covered under this limited warranty. Please refer to the cleaning instructions supplied with all National Cycle windshields.

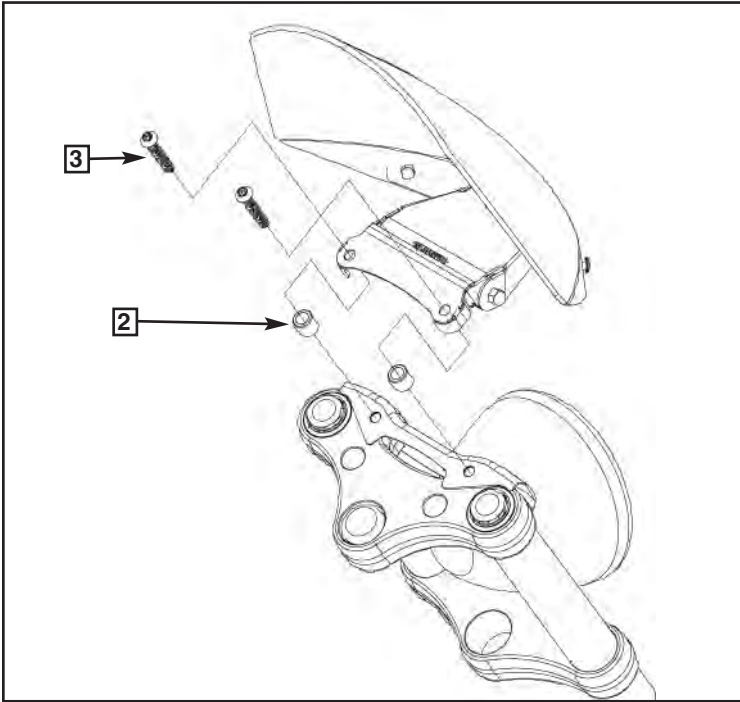


Figure 1

**INSTALLATION**

1. Remove the two stock screws from the top tree cover. **(T40 Torx Wrench)**
2. Refer to Figure 1 and place one bushing (2) in each hole. **Figure 1**
3. Install the Gladiator Clamp with supplied Screws (3). **(T40 Torx Wrench) Figure 1 and 2**
4. Tighten the two Screws holding Clamp to top tree securely (17 ft-lbs or 23 Nm). **(T40 Torx Wrench) Figure 3**
5. Adjust shield to desired position. Tighten Cap Nuts securely (72 in-lbs or 8 Nm). **(7/16" Box Wrench) Figure 3 and 4**



Figure 2



Figure 3

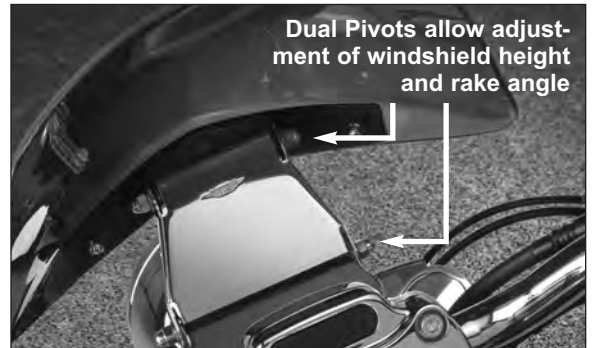
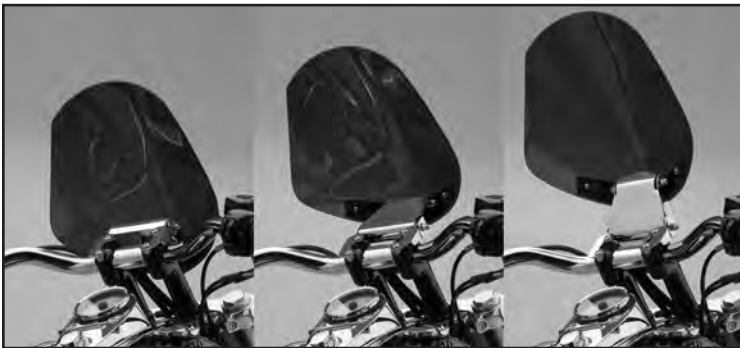


Figure 4